

CT DEEP **2017**
FISHING REPORT NUMBER 28
10/19/2017



Brook Trout -Charr (*Salvelinus fontinalis*)



YOU CAN FIND US DIRECTLY ON FACEBOOK. This page features a variety of information on fishing, hunting, and wildlife watching in Connecticut. The address is www.facebook.com/CTFishandWildlife.

SHARE THE EXPERIENCE
Take someone fishing

INLAND REPORT

Fall TROUT and ATLANTIC SALMON Stockings-

Broodstock Brook Trout, averaging 3 pounds, were stocked into Mohawk Pond (Cornwall) and Black Pond (Woodstock). Approximately 180 fish were stocked into each pond. [Video](#) of some of the fish stocked as posted on [CTFishandWildlife](#) Facebook Page.

No additional Atlantic Salmon Stocking this week. Last week we began our 2017 stockings of broodstock **Atlantic Salmon**. **Mount Tom Pond** (115 fish) and **Crystal Lake** (Ellington) (115 fish) on Wednesday, 10/11, and the **Shetucket River** (230 fish) was stocked on Thursday, October 12. The upper **Nauguatuck River** broodstock area (115 fish) was stocked on Friday, 10/13.

Trout stockings continued this week (see Lakes & Ponds and Rivers & Streams sections below for locations). Stay up to date with our daily stocking post on [Facebook](#), our [interactive trout stocking map](#), and our [stocking report](#).

TROUT-LAKES & PONDS – Improving quickly with re-start of fall stocking. Here is this week’s stocking list: **EAST:** Black Pond, Mohegan Park Pond. **WEST:** Mohawk Pond, Black Rock Pond Trout Park, Chatfield Hollow Trout Park (Schreeder Pond only).

TROUT- RIVERS & STREAMS. Conditions for trout fishing are fair to good depending upon if we were able to stock or not. Flows are variable across the State with a number of places now hitting the “dry” category (see [stream flow graphic on page 4](#)).

Farmington River – Fishing remains very good. The West Branch flows are clear and lower than typical for late September (currently 68 CFS at Riverton, with the Still River at 14 CFS). Morning water temperatures are ranging from the low 50’s °F through New Hartford (and into the mid 60’s °F farther downstream).

Hatches/patterns time to go to the fall patterns, some great fishing to be had mid- late afternoon with a variety of insects taking wing during the rapid warm-up into the low 70’s. Some go-to flies include Isonychia (#12-14, parachute style), Blue Wing Olives (#18, 22-24, mid-late afternoon), Caddis (tan #16-18, all day; brown #16-18), Midges (#20-32, morning), and Rusty Spinner (#14-20, mornings). White Woolly Buggers, Muddlers, or

Only a couple weeks left to get your best “shot” into the Angler’s Guide Cover contest. Email your high quality photo to: deep.inland.fisheries@ct.gov by November 1.

Grey or Black Ghosts (#4-10) are standard streamers. Bottom bouncing nymphs with Caddis pupa (#14-16), Serendipity (#14-16), Prince (#6-18) and Hare's ear (#8-20) works well.

Housatonic River – Fishing has been very good. The flows are very low, offering a chance to scout and fish some spots you normally could not reach this time of year. Flows are currently 242 CFS at Falls Village and 299 CFS at Gaylordsville. Morning water temperatures are in the upper 50's °F.

Hatches/patterns include a good diversity of insects. The area between the Route 4 Bridge and Route 341 Bridge is still offering great fishing with smallmouth and fallfish eagerly hitting a variety of poppers, dry flies, nymphs, and streamers.

Patterns to try include Blue Wing Olive (#18-24, early morning; spinner fall in evening), Isonychia (#10-12 evening), Midges (#20-24) and caddis (#14-18, early morning & evening). Also try terrestrial patterns such as Black and Cinnamon Ants (#16-18, midday, when breezy) and large streamers, or nymphing the pockets, deeper riffles and pool heads.

LARGEMOUTH BASS fishing is reported as good. Places where the largemouth are eager to bite include East Twin Lake, Gardner Lake, Pickerel Lake, Beseck Lake, Amos Lake, Beach Pond, Highland Lake, Seymour Reservoir #4, Crystal Lake, Mudge Pond, West Side Pond, Tyler Lake, Dog Pond, Hatch Pond, Park Pond, Lake Wononskopomuc, Lake Saltonstall, Bishop Swamp, Winchester Lake, Congamond Lakes, Quinebaug Lake, Black Pond (Meriden), Burr Pond, Griggs Pond, Anderson Pond, Billings Lake, Moodus Reservoir, Aspinook Pond, Babcock Pond, Pachaug Pond, Lake Hayward, Quonnipaug Lake, Rogers Lake and Stillwater Pond.

Tournament angler reports are from Bashan Lake (good to very good, 2.59 lb lunger), Lower Bolton Lake (slow for some, good for others who found the right spot, 2.74 lb lunger, but lots of "skinny" fish"), Lake of Isles (fair, 2.07 lb lunger), Long Pond (slow to fair, 2.82 lb lunger), Mansfield Hollow Reservoir (slow to fair, "lots of shorts for one club", 3.40 lb and 3.22 lb lunkers), Quaddick Lake (good, 5.6 lb lunger), Bantam Lake (slow, 2.08 lb lunger), Candlewood Lake (fair), Highland Lake (slow to fair, 3.04 lb lunger) and Lake Lillinonah (fair, 5.1 lb and 4.91 lb lunkers).

SMALLMOUTH BASS. Catches reported from Candlewood Lake, Housatonic River (upper), Naugatuck River, Lake Zoar and Lake Lillinonah. Housatonic River smallmouth fishing has been good. **Tournament angler reports** are from Bantam Lake (fair, 3.65 lb lunger), Candlewood Lake (fair to good, 3.95 lb lunger), and Lake Lillinonah (fair to good, 3.88 lb and 3.72 lb lunkers).

NORTHERN PIKE. A few beasts were landed in the Connecticut River near Haddam as well as several decent fish out of Lake Lillinonah.

CARP are still providing solid and consistent action in the Housatonic River Impoundments, West Thompson Reservoir, Batterson Park Pond, CT River/Mattabesset River, and the Quinebaug River (West Thompson and Aspinook Pond).

WALLEYE. Consistent catches of medium-sized Walleye from Squantz Pond, Batterson Park Pond, and Lake Saltonstall, and the Saugatuck Reservoir. The annual fingerling stocking is scheduled for Friday, October 20.

CATFISH. Fishing is very good with the warm weather keeping some of the monster cats active. Cast a line into our [Catfish Management Lakes](#) and [Community Fishing Waters](#). Try cut fish (mackerel) or live shiners to entice a cat to bite.

PANFISH are still a great bet. Calico Bass are eager to hit a variety of small jigs and live minnows.

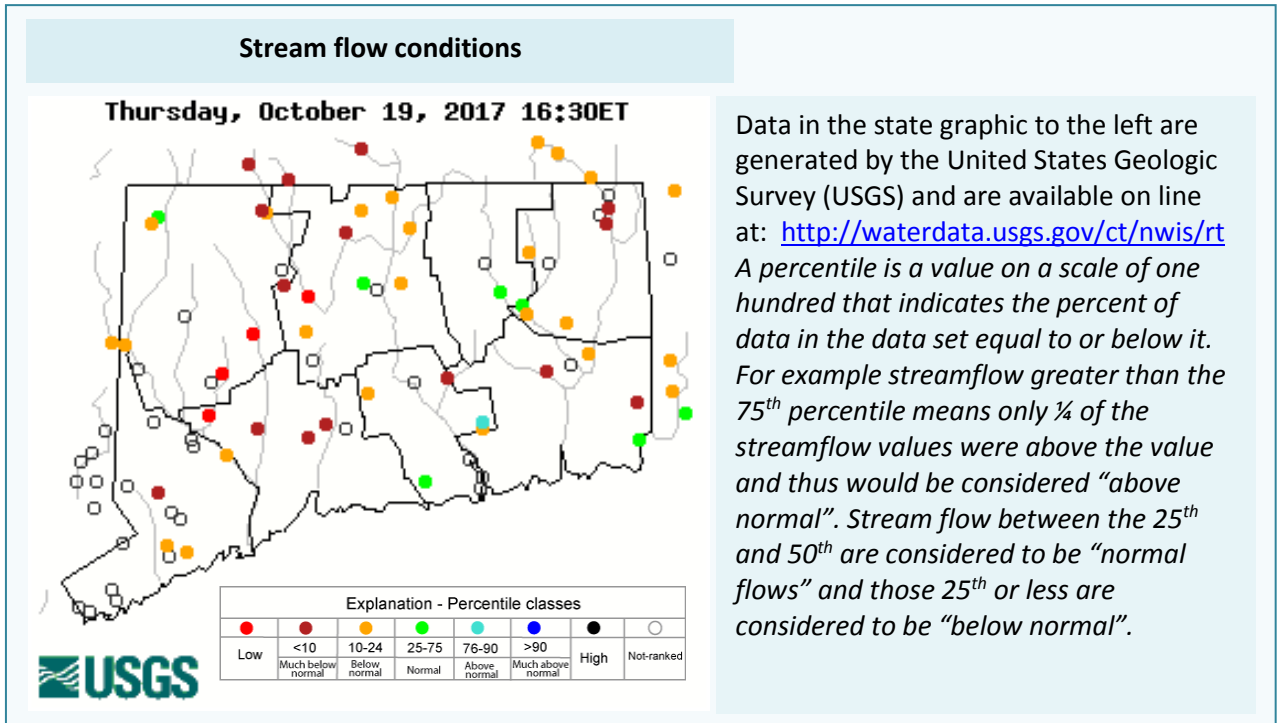
CONNECTICUT RIVER. **BLACK CRAPPIE** action is improving in the coves up and down the river. Target the backwaters with small shiners, silver grubs, or small Rapalas. **SMALLMOUTH BASS** have been reported as hit or miss in from Hartford upstream. **LARGEMOUTH BASS** are being caught (but you have to work for them) in the Hartford to Haddam area. **CARP** are providing action in coves and in the mainstem, especially Salmon River Cove and the Middletown area. **BOWFIN** can be found in backwater areas with dense weeds especially in

Keeney Cove, Crow Point Pond, and Chapman's Cove. **NORTHERN PIKE** fishing is reported as good in the main stem and coves. angler fishing the Shetucket River in Scotland during the perfect fall conditions this past week.



Atlantic salmon fishing regulations and areas summary

- **Regulations for Atlantic salmon on the Shetucket and Naugatuck Rivers.** In the Naugatuck, Housatonic and Shetucket Rivers, from September 1 through November 30, angling for Atlantic salmon is restricted to **catch-and-release only**. From December 1, 2017, through March 31, 2018, the daily creel limit for Atlantic salmon will be one. During the open season in the rivers, the legal method for taking Atlantic salmon is limited to angling using a single fly, or an artificial lure with a single free swinging hook and no additional weight can be added to the line above the fly or lure. Also, from October 1st through March 31st, fishing for other species in the designated Atlantic Salmon “Broodstock Areas” is restricted to the gear legal for Atlantic salmon.
- On the **Shetucket River**, anglers can fish for salmon downstream from the Scotland Dam (Windham) to the Water Street Bridge in Norwich (the first bridge upstream of Norwich Harbor). The salmon are stocked into one designated Atlantic Salmon “Broodstock Area”, from the Scotland Dam to the Occum Dam.
- Anglers are allowed to fish for salmon in the **Naugatuck River** from the confluence of the East and West Branches (Torrington) downstream to the Housatonic River (Derby). Anglers may also fish for Atlantic salmon in the Housatonic River downstream of Derby Dam. The salmon are typically stocked into two designated Atlantic Salmon Broodstock Areas on the Naugatuck River, the “Campville Section” of the upper Naugatuck River from Route 118 downstream to the Thomaston Flood Control Dam (Litchfield-Thomaston) and the “Beacon Falls Section” of the lower Naugatuck, from Prospect Street (Naugatuck) downstream to Pines Bridge Road (Route 42 bridge, Beacon Falls). From October 1st through March 31st, fishing for other species in these designated Atlantic Salmon Broodstock Areas is restricted to the gear legal for Atlantic salmon.
- The regulations for Atlantic salmon released into lakes and ponds are different from the regulations for salmon on the Naugatuck and Shetucket Rivers. **In each lake, the regulations for methods, seasons and minimum lengths for salmon will be the same as for trout in that specific water body but the daily creel limit will be one salmon per day.** (Please refer to the 2017 CT Angler's Guide for trout regulations).



“Connecticut is Fishy!” a new interactive fishing resource for novice and expert alike. The link is on our main page at www.ct.gov/deep/fishing or hit it directly at <http://ctdeep.maps.arcgis.com/apps/MapJournal/index.html?appid=a17906f58b594e118555d48bf999b51c>

We are fortunate that within a 60 minute drive you can be fly fishing the famed Housatonic or Farmington River, catching monster pike in Bantam Lake, jumbo carp from the Connecticut River, or on the Sound fishing for tasty favorites like fluke, porgy, black sea bass, striped bass and bluefish.

This NEW interactive application has lots of great information, including maps and links, providing all you need to know about Connecticut's fisheries.

Give it a spin and let us know what you think!



LAKE & POND BATHYMETRIC MAPS

Bathymetric maps of many of Connecticut's public access lakes and ponds can be found online at:

www.ct.gov/deep/lib/deep/fishing/general_information/lakebathymetrymaps.pdf

Both plain line maps and maps overlaying an aerial photo available.



NOTES & NOTICES:

CANDLEWOOD LAKE (boat launches). Boaters using the Lattins Cove launch should take extra care. The launch ramp is damaged, with the bottom of the ramp broken up and a large drop off. Plans for repairs are in process and a sign is being posted to mark the end of the ramp surface. **Backing down beyond that sign is not recommended at this time.** The lake level is also down close to the minimum “summer” level, at which launching of trailered boats (especially larger boats) becomes more difficult (but usually still doable) at Lattins Cove. The Squantz Cove state launch is fully functional.

CANDLEWOOD LAKE (safety buoy removals). The Candlewood Lake Authority has removed the hazard, navigation and speed buoys for the winter. Boaters, especially those unfamiliar with the lake should use extra caution out on the lake.

CONNECTICUT RIVER (invasive species alert). Last year hydrilla was found in the main stem Connecticut River in Glastonbury (near Glastonbury’s Riverfront Park & Boathouse). **There are now reports of plants found at other locations along the river including Wethersfield and Crow Point coves and at a site in Enfield.** See the Coventry Lake entry below for what river users should do to prevent spread of this invasive plant to other waterbodies.

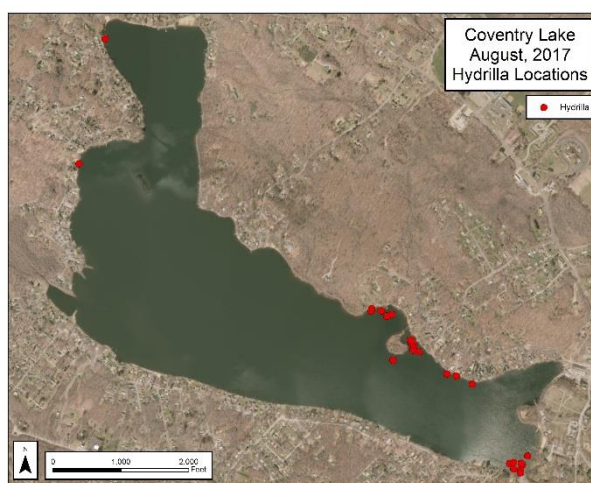
COVENTRY LAKE (invasive species alert). Hydrilla, a very highly invasive aquatic plant, has been found growing in Coventry Lake. All lake users should take extra care to check and clean their boats (including canoes, kayaks and rowing sculls), trailers, and fishing equipment before leaving the boat launch, or leaving the lakeshore.

PACHAUG POND (drawdown). A 3.5-foot drawdown facilitate dam maintenance began on Tuesday, October 10.

QUADDICK LAKE (drawdown, launch access). The winter drawdown has begun. Also note that the park gates will be closed for the season to vehicular access on October 30.

WEST HILL POND (drawdown). A 5-foot drawdown is ongoing to facilitate dam maintenance.

UPCOMING DRAWDOWNS. In western CT, **Lake Zoar** is scheduled for a drawdown from October 27 to November 5, **Lake Lillinonah** is scheduled for a drawdown from November 6 to November 15, and the winter drawdown of **Highland Lake** is scheduled to start in early November. In eastern CT, winter drawdowns of Ashland Pond, Beach Pond, Middle & Lower Bolton Lakes, Gardner Lake, Hopeville Pond, Mashapaug Lake and Beseck Lake are scheduled to begin in early November



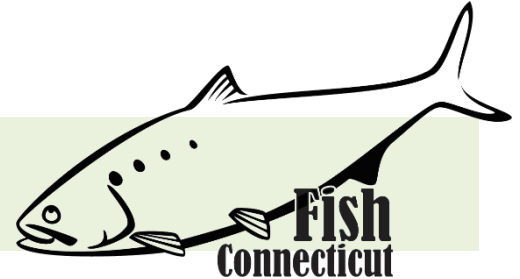
Coventry Lake (Wangumbaug Lake) boaters should avoid the areas noted with red dots to avoid fragmenting and spreading hydrilla.

PHOTO CONTEST: Do you have the next Angler’s Guide cover shot? Email us your high quality (high resolution) photos **by November 1** to Deep.inland.fisheries@ct.gov and include [photo contest](#) in the subject line.

CT FISHIN’ TIPS is our monthly e-newsletter dedicated to providing information, tips and pointers about fishing in Connecticut. Get CT Fishin’ Tips delivered automatically to your in box by subscribing at www.ct.gov/deep/newslettersubscription

NEW! Youth Fishing Passport [Fishing Challenge Scorecard](#): Download the new scorecard for your Youth Fishing Passport Holder on the program web page at www.ct.gov/deep/yfp. Top anglers will receive a great prize pack of fishing gear.

MARINE FISHING REPORT



Surface water temperatures in Long Island Sound (LIS) are in the low to mid 60's °F. Check out the following web sites for more detailed water temperatures and marine boating conditions:

<http://www.mysound.uconn.edu/stationstat.html>

http://marine.rutgers.edu/mrs/sat_data/?nothumbs=1

<http://www.ndbc.noaa.gov/>

<http://www.wunderground.com/MAR/AN/330.html>

Connecticut State Boundary Line in Long Island Sound. Anglers please note: Though Connecticut has reciprocity with neighboring states (New York, Rhode Island, Maine and Massachusetts), residents of Connecticut are required to have a CT Resident Marine Waters Sport Fishing License to fish in the Marine District.

WHALES have been reported in Long Island Sound (in early July, juvenile humpback whales have been spotted on the New York side of the sound), please see check [WHALE WATCHING GUIDELINES](#).

Note: All marine mammals are protected by the Federal Marine Mammal Protection Act. Following these recommended operational guidelines helps minimize chances of harassing or injuring whales and violating Federal law. Guidelines apply to all large whales from Maine through Virginia, except North Atlantic right whales. It is illegal to approach a right whale within 500 yards (1500 feet) unless granted specific exemption or authorization.

SEA TURTLES: [See a Tangled Turtle? Call the Hotline!](#) 1-860-572-5955 ext. 107. This is the time of year when leatherback, loggerhead, green, and Kemp's ridley sea turtles return to northern waters, with many sightings around Long Island Sound.

SHARK SPECIES YOU MAY ENCOUNTER IN COASTAL WATERS OF CONNECTICUT: Although you might catch Sand Tiger and Sandbar (Brown) Sharks, they are both protected prohibited species and must be released unharmed. **IF YOU DON'T KNOW, PLEASE LET IT GO!** [Coastal shark information](#).

TAUTOG fishing is good. Tautog (blackfish) season is in full swing, although many Connecticut fishers are not quite ready for the transition as schools of False Albacore (Little Tunny) are still marching speedily up and down CT's shoreline. Water temperatures still in the mid to high 60's not triggering the feeding frenzy that we usually expect by mid-October. But some fishers are reaching their daily creel limit (4) of Togs, and here is

where you can catch your daily limit; **Captains Island off of Greenwich, Buoy 32A in Greenwich, Cockenoe Island in 6'-20' of water, the backside of Sheffield Island, the Eastern side of Fayerweather Island (accessible via Seaside Park), just south of Two-Tree Island, the three breakwaters at the entrance to New Haven Harbor, off Prices Rocks at the mouth of the Five Mile River in Rowayton, off the rock cropping's located 1/4 mile South of Fort Trumbull State Pier**, and this week's top tautog location; **Race Rock and lower Thames River**, where anglers have been weighing in some very impressive specimens (12 lbs). Fortunately for shore fishers, blackfish are currently found in very shallow water (4'-10') near rocky reefs, shellfish beds, wrecks/wood pilings and rock outcroppings. Just dunk a jig with a 1/4 to 1 ounce weight tipped with a green, Asian shore or hermit crab. There are plenty of crabs under large flat rocks at Sherwood Island and Hammonasset State Parks. Or you can simply patronize your [local bait and tackle shop](#) where they are fully stocked. I would also highly recommend planning a trip on a [party/charter boat](#) trip to fish for tautog.

ATLANTIC BONITO & LITTLE TUNNY fishing is very good. False Albacore (Little Tunny) are really loving these water temps and there is no sign of them migrating out of Long Island Sound. False Albacore are the most common Tuna in the Atlantic Ocean. They are found from Brazil to New England and South Africa to the United Kingdom. "Fat Alberts" as they are called are pound for pound the most powerful fish one can catch. The world record is 36 pounds (48") caught off New Jersey. They only have a life span of five years and reach sexual maturity in one year. OK, so where do I hook onto one of these beasts of the East? Well this week they have been repeatedly spotted at **Race Rock Lighthouse, Middle-ground, Norwalk Islands, off of Compo Beach, Captains Island in Greenwich, off of Rye, New York's Playland Amusement Park, Greens Ledge Lighthouse, in between Stratford Shoal Lighthouse and Green Can "C," the lower CT River, and Saybrook Point**. Shore fishers are catching them this week at **Ocean Beach, Pequot Avenue, off of Penfield Reef and also off of Harkness Memorial State Park**. They don't stay in one area for more than a moment so watch for diving birds. Sluggos, Albie Snacks, Epoxy Lures (chartreuse) and Deadly Dicks all working supremely. If you're fly fishing use a size 2 - 8 fly, and while some fly fishers stay true to match the hatch, others believe a contrasting fly stands out best as "Albies" herd thousands of identical looking bait to the surface. There's a good chance your local [party/charter boat](#) has run into a few schools treating customers with a great day of fishing.

STRIPED BASS and BLUEFISH fishing is fantastic. The Sound is locked and loaded with adult bluefish and stripers. Bluefish can be caught this week almost anywhere and "schoolie" stripers and larger holdover bass are inhabiting lower reaches of rivers and estuaries. They are coming in very close to shore chasing peanut bunker (Atlantic menhaden) and spearing (Atl. Silverside). Soft plastics are your best chance for a successful day of bass and bluefish fishing. Once the water temps start to dip a little more, bluefish will practically be walking onto the beach and jumping in your cooler. **Time for shore anglers to hit the SURF...locate your favorite coastal state park(s)**. The fall season appears to be starting off strong, with many charter boat operators commenting on how many large bass there are. The best thing is...you catch them during the daytime, especially under overcast skies, especially before a storm front. Trolling weighted jigs (chartreuse) with a yellow pork rind and or live lining bunker (Atlantic menhaden) in 15 to 40 feet of water over a shoal or reef is the ticket to success. I also like dunking a live **eel on the reefs/shoal areas** during the late afternoon /evening hours. Striper spots include the Watch Hill reefs, Ram Island Reef in Fishers Island Sound, lower Mystic and Thames River, the **Race**, Sluiceway, **Plum Gut**, Pigeon Rip, **outer Bartlett Reef**, Black Point, the "humps" south of Hatchett Reef, **lower Connecticut River, Long Sand Shoal**, Cornfield Point, Southwest Reef (outer), Sixmile Reef, Falkner Island area, the reefs off Branford, New Haven Harbor (breakwalls) and the upper reaches, **Charles Island area**, lower Housatonic River, buoys 18 and 20 off Stratford Point, **Stratford Shoal/Middle Ground**, Milford Point, Penfield Reef, around the **Norwalk Islands**, and Cable and Anchor Reef.

BLACK SEA BASS and SCUP fishing is still phenomenal. Anglers are still catching their daily limit of porgy (scup) and BSB (black sea bass) in 60-100 feet of water. This week the following locations have been good; **Valiant Rock, Race Rock, Spindle at Bartlets Reef, Red nun buoy #4 and the 170' trench, Middle-ground and Stratford Shoal Lighthouse, Shimon and Shea Island and Greens Ledge and Penfield Reef Lighthouse**. Scup

are found at **Todds Point, Shippan Point, Calf Pasture Beach Pier, Compo Beach, Middle-ground, Saint Marys By The Sea, Seaside Oark, Sherwood Island State Park, South Benson Pier/Ash Creek, Fort Trumbull State Pier, Hammonasset State Beach, Fort Nathan Hale, Rocky Neck State Park, Eastern Point, Avery Point Pier, the Wall at Stratford and Silver Sands State Park.** A high-low rig tipped with squid and clams are all you need: heavy on the chumming will also help attract them. Once you get a bite make sure to set the hook and whether releasing or keeping, be careful of their spines. Locate your favorite [Enhanced Shore Fishing Opportunities](#) for these hard fighting and excellent eating "Reef Slammers". Contact your [local bait and tackle shop](#) for updated fishing information.

HICKORY SHAD fishing is good in the **Black Hall River/Lieutenant River (out-going tide)**, Housatonic River and the lower **Connecticut River (DEEP Marine Headquarters fishing pier)**. Fishing remains good at Fort Trumbull, Black Hall, Clinton Harbor River systems and the lower Connecticut River (DEEP Marine Headquarters fishing pier).

NOTABLE CATCHES –

Species	Length (in.)	Weight (lb)	Angler
Clearnose Skate	37.0"	9 lbs 8 oz	Anthony Carpentino
Tautog	24.5"	9 lbs 2 oz	Jared Macha
Striped Bass	47"	C&R	Elliot Thomas

For Current Connecticut Recreational Fishing Regulations: Anglers should consult the 2017 Connecticut Anglers Guide which is now available at most Town Clerks Offices, DEEP offices and at tackle stores selling fishing licenses. Current regulations, electronic versions of the Angler's Guide and additional information is on the DEEP website at: www.ct.gov/deep/fishing.

The Connecticut Department of Energy and Environmental Protection is an Affirmative Action/Equal Opportunity Employer that is committed to complying with the requirements of the Americans with Disabilities Act. Please contact us at (860) 418-5910 or deep.accommodations@ct.gov if you have a disability and need a communication aid or service; have limited proficiency in English and may need information in another language; or if you wish to file an ADA or Title VI discrimination complaint.



DEEP WEEKLY Fishing Report

Connecticut Department of
Energy & Environmental Protection

79 Elm Street, Hartford, CT 06106

www.ct.gov/deep/Fisheries